



bartle & gibson





Bartle & Gibson is proud to have been serving Western Canada for 75 years. We would like to thank you for your trust, support, and for making us your plumbing, heating and electrical distributor of choice. Thanks to this support, Bartle & Gibson continues to be guided by the philosophy, "look after your customers the way you would want to be looked after, and business will look after itself".

We provide more than wholesale distribution of plumbing, heating, and electrical supplies. From our front line staff through to the president of the company, Bartle & Gibson continually provides exceptional service to all of our customers. Our goal is to give you the best product selection in the industry and to have your orders ready when you need them.

TABLE OF CONTENTS

DOWNLIGHTS

FLAT	10
RECESSED	12
RETROFIT	15
CONNECTED	17
GIMBAL	20

CEILING MOUNT

EDGE LIT	21
SURFACE	22

TROFFERS

PANELS	23
BASKET	24
RETROFIT	25

HIGHBAYS

ROUND	26
LINEAR	27

STRIPS - LINEAR

VP	31
WRAP	32
STRIP	33

INDUSTRIAL

EXPLOSION RATED	35
-----------------------	----

LAMPS / DRIVERS

LAMPS	36
DRIVERS	38

EMERGENCY

COMBINATION & EXIT SIGNS	39
--------------------------------	----

AREA / FLOOD / ROADWAY

BOLLARD / POST TOP	42
FLOOD	44
CANOPY	45
AREA / ROADWAY	46
POLES	47

WALL MOUNTED

CLASSIC	48
WALLPACKS	50
SECURITY	52

CONTROLS

SYSTEMS	54
WIRELESS	58

DECORATIVE

PENDANT	60
TAPE / UNDER CABINET	61
VANITY / SCONCE	62

UV DISINFECTION

UVC	63
-----------	----

MEDICAL

HEALTHCARE	64
------------------	----

HORTICULTURAL

AGRICULTURE	65
-------------------	----

TEMPORARY

JOB SITE	66
----------------	----



COMMERCIAL LIGHTING DESIGN



Enhancing the experience through lighting is what we strive for. Each space has its unique flow and we want to accent this with our specialized commercial lighting design.

BUYING CONSIDERATIONS



Cost

- Capital - initial cost
- Long-term maintenance, consumables & replacement parts
- Energy consumption/efficiency



Maintenance

- Time, cost & labor
- Component availability
- Longevity & replacement



Aesthetics

- How does the light look?
- How does it behave?
- Color Temperature



Function

- Proper or adequate light for task
- Lighting controls

CONTACT US TODAY!

FOR MORE INFO: contact your local B&G branch

GET STARTED!



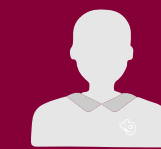
Goals

Share with us your goals for your lighting project.

Details

Share as many details as you can:

- Desired lighting style, lighting type, brands etc.
- Space type: office, retail, warehouse, public etc.



Inspection

Schedule an on-site inspection in order to figure the feasibility, budget, and any recommendations we may have.

Quotation

Accurate quotation with cost breakdowns, timeline, available delivery dates and other pertinent information.



Follow-Up

Follow-up with any questions you may have with the quotation and any other aspect of the project.

Project

If you accept the job, the project can include:

- A layout (3D modeling) based on building codes
- Energy audits & rebate application assistance
- continuous project updates from start to finish.



After Sales

Not only do we provide a comprehensive service for warranty issues, we're also available for any questions and help after the job is done.

LIGHTING TERMS

BACKLIGHT, UPLIGHT, AND GLARE (BUG) RATINGS

May be used to evaluate luminaire optical performance related to light trespass, sky glow, and high angle brightness control. These ratings are based on a zonal lumen calculations for secondary solid angles defined in TM-15-07.

BEAM ANGLE

Refers to the degree of width in which light emanates from the light source. The angle between those points on either side of the beam is where the light's intensity drops to about 50%.

COLOR TEMPERATURE (Kelvin)

Kelvin temperature equivalent is used to describe the lamp's color. Lamps generally vary from about 2500K, which is quite yellow through to 7000K, which is considerably bluish. The temperature of balanced white is about 5500K.

DLC (Design Lights Consortium)

Association of utility companies used to create and maintain a minimum performance standard for LED luminaires.

ENERGY STAR®

EPA brand that creates a minimum performance standard for many household items and appliances including light bulbs and fixtures.

FOOTCANDLE (fc)

Unit of Measurement for Illuminance. One foot candle is equal to one lumen per square foot.

GLARE

Glare is a visual sensation caused by excessive brightness. It can be discomforting or disabling.

IC (Insulation Contact) RATED

Describes an electrical fixture that does not require a clearance between the fixture and insulation material.

ILLUMINANCE (Lux)

Light arriving at a surface, expressed in lumens per unit area; 1 lumen per square foot equals 1 footcandle, while 1 lumen per square meter equals 1lux.

IP (Ingress Protection)

Used to define levels of sealing effectiveness of electrical enclosures against intrusion from foreign bodies (tools, dirt etc) and moisture.

L70

Used to describe the LED's expected light output over its stated life span. "L70" means that at the defined life time (hours) the LED product will emit a minimum of 70% of its initial light output.

LAMP

The source of light in a fixture, colloquially called a "light bulb."

LIGHT EMITTING DIODE (LED)

A semiconductor device that emits light as electrical current passes through it. Light-emitting diodes are more efficient than other light sources and offer exceptionally long life.

LM-79

Testing standards for performance characteristics of LED lamps and luminaires.

LM-80

Testing standards for the lumen maintenance for LED packages and arrays.

LUMINIAIRE

Light Fixture. A complete unit consisting of lamp, ballast, reflectors, lens, and other parts.

LUMINOUS EFFICIENCY / EFFICACY (Lumens per Watt)

A measure of how much total effective light in all directions (Lumens) is produced per Watt of electrical power consumed.

LUMINOUS FLUX (Lumens)

Perceived total amount of useful light from a source is the sum of the Candela measurements in all directions. It is measured in Lumens (lm).

ICON LEGEND



Color Selectable



Power Selectable



Damp Location



Scenes



Dimmable



Schedules



Insulation Contact Rated



Smart Things



IP Rated



Tunable White



Motion Sensor



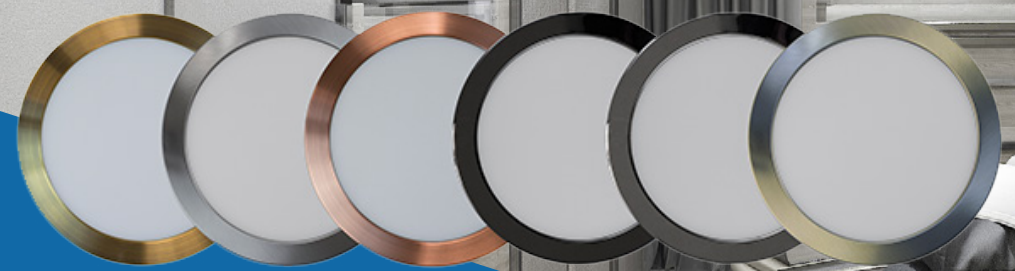
Warm Dim



Photocell



Wet Location



CIRKA

CIRKA is an LED ceiling and wall surfaced mount utilizing up-to-date LED technology in a light and slim housing.

It provides highly efficient illumination that is perfectly suited for new surfaced installations solutions.

Typical applications include Residential, Office, Retail, Hospitality in areas such as hallways, bathrooms and closets.

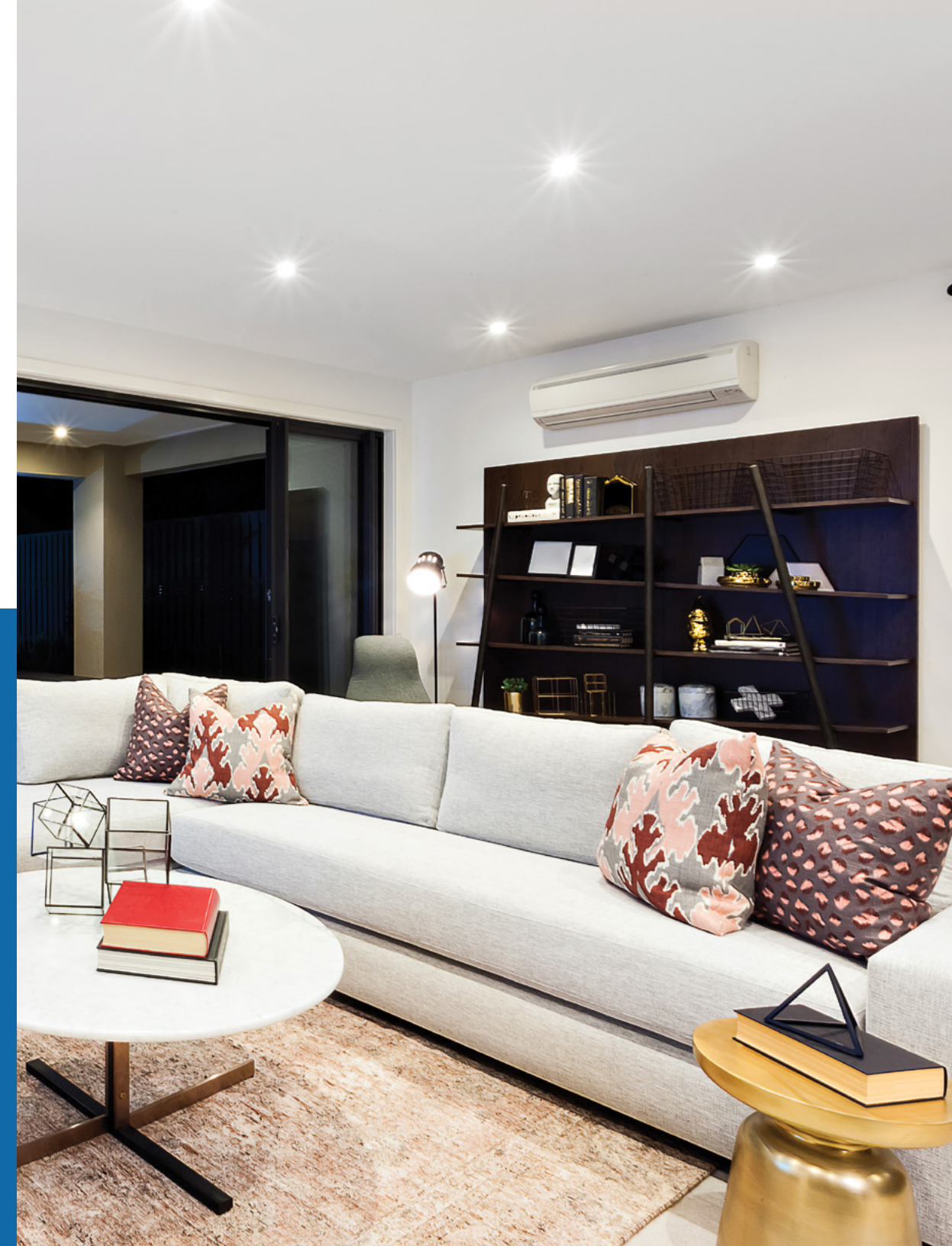


LPDL CCT SELECT

The LPDL CCT SELECT is a color temperature adjustable downlight which is made to be easily installed in confined or constraint areas such as wood beams, ceiling joist or air ducts.

The driver is mounted separately from the light source which allows the luminaire profile to be less than 1" thick which gives you all the flexibility you need during installation!

It is the perfect all in one solution with up to 5 integrated color temperature selections.





AcuityBrands

WAFER

The **Wafer™ LED Downlights and Gimbal with Switchable White** provide high-quality light output and efficiency featuring a switch for easy color temperature adjustment – while eliminating the need for recessed housings.

Sizes	CCT	Finish
3"	3000K, 4000K, 5000K	MW - Matte White
4"	or 2700K, 3000K, 3500K	MB - Matte Black
6"		BN - Brushed Nickel ORB - Oil Rubbed Bronze
8"		MW - Matte White MB - Matte Black BN - Brushed Nickel



Signify



STANPRO

FLAT DOWNLIGHT

Lightolier LED Flat Downlight Select provides an easy and quick downlight solution without the traditional frame and reflector. Perfect for installation in low plenum and existing shallow space ceilings.

Sizes	CCT
4"	2700K, 3000K, 4000K,
6"	5000K



LPDL

Choice LPDL™ is a simple and economical solution for any downlight application where an even light is needed. Being less than 1" thick, it can be installed in any types of ceiling. This LPDL offers a great quality at a great price rate with 750 lm and an IRC of 80.

Sizes	CCT	Finish
4"	3000K, 4000K, Warm Dim	W
6"		BN





PODZ

Juno® Podz™ LED downlights offer flexibility at your fingertips.

You control the LED color temperature and lumen output in your space with the switchable LED color temperature and adjustable lumen output switches.

Sizes	CCT	Finish
4"	2700K, 3000K, 3500K, 4000K, 5000K, Warm dim	MW - Matte White
5"		MB - Matte Black
6"		BN - Brushed Nickel ORB - Oil Rubbed Bronze



JunoConnect Wafer™ 4" & 6" LED Downlight
Get started with connected lighting easily and integrate with your smart home system





Liteline

SLIM LED

SlimLED is an entry-level, budget-friendly LED fixture with a thin profile.

It offers residential and light commercial spaces an ideal combination of simplicity and reliability in the form of ease of install, a WET location rating on select models, and a lifetime warranty.

Sizes	CCT	Finish
4"	2700K, 3000K, 3500K, 4000K, Dim to Warm	W - White
6"		B - Black S - Silver BN - Brushed Nickel



JBK

IC-rated, Lithonia OneUp™ direct-wire downlights feature a unique "canless" design.

These all-in-one LED fixtures include an integrated junction box for direct wiring, require no tools (other than a hole saw for your ceiling cutout) and take less than 1/3 of the time to install versus a conventional incandescent can.



AcuityBrands

Sizes	CCT	Finish
3"	3000K, 4000K, 5000K	MW - Matte White
4"		ORB - Oil Rubbed Bronze
6"		BN - Brushed Nickel



Signify

COMMERCIAL RETROFIT

Lightolier Commercial Retrofit downlight is an easy to install downlight with adjustable lumen output switch. It offers lumen output ranging from 500lm to 3000lm, and trim options from 4 inch to 9.5 inch.

This convenient downlight is ideal for retail, residential and office application.

Sizes	CCT	Finish
4"	2700K, 3000K, 3500K, 4000K	W - White
6"		
8"		
10"		



PRESTO

Presto LED downlight is an all-in-one product that will fit seamlessly into all residential lighting applications.

The base model is complete with a white baffle finish, but this line also offers trims made of stamped metal that will enhance the look of the luminaire, creating a sophisticated look tailored to your decor.



STANPRO

Sizes	CCT
4"	2700K, 3000K, 4000K
6"	3000K, 4000K





CEILING DISK

The **LED Ceiling disk light** combines exceptional light output and it mimics the look of an LED downlight for applications in limited spaces, low ceilings and on concrete material. Installing them directly into a junction box, this fixture is versatile and will fit any application.

Sizes	CCT
4"	2700K, 3000K, 4000K
6"	



SLIMLED MULTI

The **SLMT4-8W** is an 8 watt 4" round downlight for retrofit application onto existing 4" recessed housings or 4" octagon box.

It is a high-performance, easy to install residential grade downlight solution that offers good light output, energy-efficiency and streamlined design.

Sizes	CCT
4"	2700K, 3000K, 3500K, 4000K, 5000K



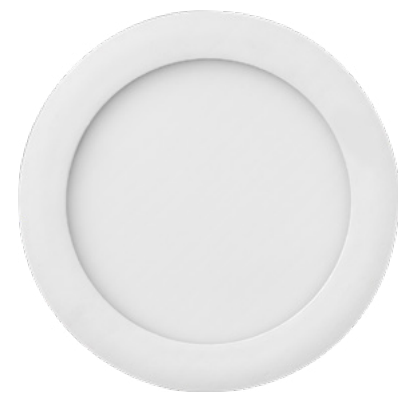
ON CLOUD



OnCloud downlights offer full color and white tuning that you can adjust for any setting.

Select the exact shade you want or choose from integrated dynamic modes to create an immersive experience that can be added to scenes and timers.





AcuityBrands

JUNO CONNECT

JunoConnect™ Smart Wafer is the perfect way to get connected with your smart home lighting solution.

JunoConnect uses Bluetooth or Zigbee to pair to your mobile device or compatible smart home hubs.

Sizes	CCT
4"	2700K - 5000K
6"	



JUNO AI

Juno AI™ integrates three advanced technologies – Juno® LED lighting, a JBL® speaker and Amazon Alexa built-in – into a single, centrally located downlight that easily converts any house into a fully functional smart home.

Sizes
6"



AcuityBrands



Smart Lights, Simple Life.



Light up your everyday life with Liteline OnCloud Smart Fixtures that allow you to seamlessly control your lights through the WIZ app on your smartphone or tablet from anywhere.

Create scenes, schedules, rhythms, and much more with 16 million colors or the white spectrum (27K-50K) to bring.

SKYE OnCloud features regressed optics for quiet ceilings and interchangeable magnetic trims. Liteline OnCloud fixtures can also be installed using WIZ Pro which provides professional grade technology for commissioning, managing and controlling OnCloud fixtures for large scale projects.

After the fixtures are installed, the client can take control from an organizational level. From your desktop you can see a floor plan of where your fixtures are, monitor energy consumption and see predictive maintenance. excitement into every room.



Liteline OnCloud

WIZ CONNECTED



STANPRO

GIMBAL

LED Gimbal High Output downlight combines a sleek design with a small aperture without any compromise to the light output.

This downlight is also available in bulk packs of 10 units, perfect for contractor projects.

Sizes	CCT
3.5"	2200K - 3000K, 3000K, 4000K



AcuityBrands

JBK

Lithonia OneUp™ are quick and easy-to-install direct-wire downlights that feature a unique "canless" design.

These all-in-one LED fixtures include an integrated junction box for direct wiring, require no tools (other than a hole saw for your ceiling cutout) and take less than 1/3 of the time to install versus a conventional incandescent can.

Sizes	CCT
4"	2700, 3000, 4000, & 5000K
6"	



STANPRO

CIRKA

CIRKA is a LED lighting that can be ceiling or wall surfaced mounted, utilizing up-to-date LED technology in a lightweight slim housing.

It provides highly efficient illumination that is perfectly suited for new surfaced installation solutions.

Typical applications include hallways, bathrooms and closets.

Size	CCT	Finish	Trim
5"	3000K, 4000K	White	BN - Brushed Nickel
7"	3000K		MB - Matte Black
9"	3000K, 4000K		PC - Polished Chrome
12"	3000K, 4000K		BRG - Brushed Rose Gold
			BB - Brushed Bronze
			SN - Satin Nickel





STANPRO

TRADITIONAL

Install **LED ceiling luminaires** and save on energy.

The series of LED ceiling-mount luminaires, with their low-profile white frosted acrylic diffusers, make a perfect solution for commercial and decorative applications.

These energy efficient luminaires are easy to install, use less energy than fluorescent lights, last longer and are maintenance free.



TRACK LIGHTS

Track lighting systems are versatile lighting solutions that can be used to power spotlights, floodlights, pendant lights or any other fixtures with the proper adapter and voltage.

STANPRO



AcuityBrands

CPNL / CPX

CPX™ is the perfect choice for a quality LED panel at an affordable price.

CPX is the perfect choice for budget-conscious schools, commercial office, and retail projects.

Sizes	CCT
1x4	3000K, 3500K, 4000K, 5000K
2x2	
2x4	



DAY-BRITE / CFI SELECTABLE BACKLIT PANEL

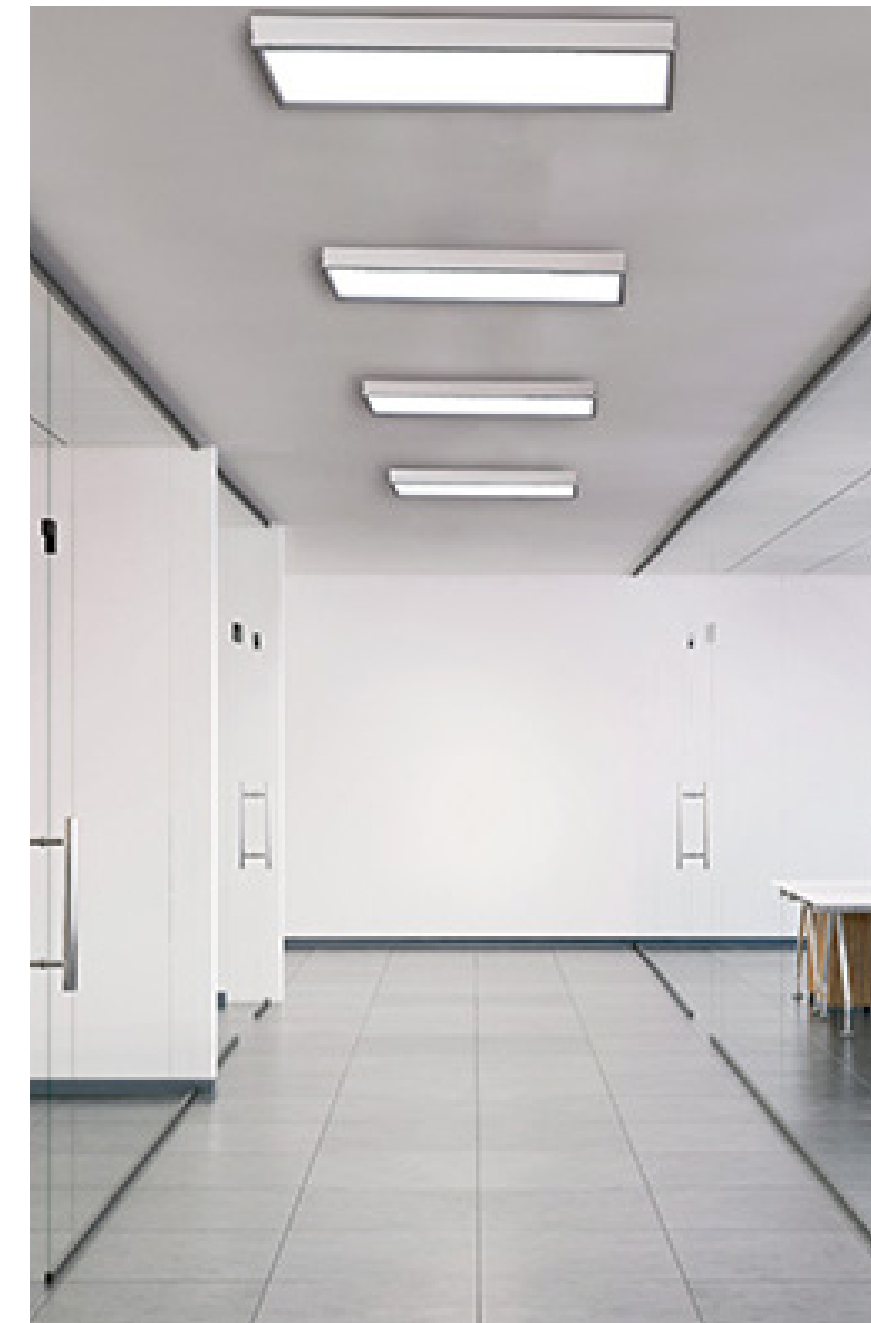
Day-Brite/CFI Selectable backlit panel is a highly versatile luminaire designed to provide three lumens and three CCT packages per size.

Available for use in recessed and surface-mount applications, the SBP is a versatile luminaire that is ideal for general lighting applications such as open office, schools, healthcare, and retail.

Sizes	CCT
1x4	3000K, 4000K, 5000K
2x2	
2x4	



signify





BLC SERIES LED

Install these **LED ceiling luminaires** and save on energy.

The series of LED ceiling-mount luminaires, with their low-profile white frosted acrylic diffusers, make a perfect solution for commercial and decorative applications.

Sizes	CCT
2x2	3500K, 4000K, 5000K
2x4	



DAY-BRITE / CFI FLUXGRID LED

FluxGrid LED reduces energy-related expenses compared to traditional lighting technologies, and helps to meet restrictive building and energy codes.

Its long life means that maintenance resources can be allocated to non-lighting tasks.

Sizes	CCT
1x4	3000K, 3500k, 4000K, 5000K
2x2	
2x4	



VOLUMETRIC RELIGHT KIT

VTLR offers a simpler, faster solution to upgrade existing fluorescent parabolas to high-efficiency volumetric LED lighting in Class A spaces.

The VTLR refreshes your space with improved quality of light without the need to remove the host fixture.

Multiple lumen packages, eldoLED® high performance driver options and nLight® lighting controls options further enhance energy savings and design flexibility.

Size	CCT	Trim
2x2	3000K, 3500K, 4000K, 5000K	BN - Brushed Nickel
2x4		PB - Polished Bronze
		PC - Polished Chrome
		BRG - Brushed Rose Gold
		BB - Brushed Bronze
		SN - Satin Nickel





AcuityBrands

JEBL

JEBL Round LED high bay is built to outlast the competition.

Maintaining exceptional light levels even at high ambient temperatures and able to withstand moisture, dust and airborne contaminants.

CCT	Lumens
4000K, 5000K	12,000 - 30,000 lm



HCX

HCX Sealed high bay is an ideal choice where functional high bay lighting is needed with an aesthetic appeal.

The round form factor lends itself to retail and institutional applications.

CCT	Lumens
4000K, 5000K	15,000 - 22,000 lm



Signify



Signify

FBX

CFI LED high bay FBX provides versatility in form and function.

With a range of lumen packages, optical distributions, and accessories available, this luminaire can be used in many different applications ranging from warehouses to retail outlets.

SpaceWise technology is optional for additional energy savings and control.

CCT	Lumens
3500K, 4000K, 5000K	8,000 - 72,000 lm





AcuityBrands.

IBE

The I-BEAM® IBE LED luminaire gives budget conscious customers a reliable solution with quality components. Pair with sensors and dimming to save even more energy and extend the life of the fixture.

CCT	Lumens
4000K, 5000K	12,000 - 22,000 lm



Signify

FBY

Day-Brite / CFI FBY LED high bay provides versatility in form and function.

With a wide range of lumen packages and accessories available, this luminaire can be used in many different applications ranging from warehouses and manufacturing facilities to retail outlets and school gymnasiums.

CCT	Lumens
3500K, 4000K, 5000K	12,000 -60,000 lm



For your everyday lighting needs, RAB Design offers an extensive line of products ranging from Area Lights, Wall Lights, Landscape Lights, and more.



AREA LIGHTS



WALL LIGHTS



FLOOD LIGHTS



LANDSCAPE LIGHTING



INDOOR LINEAR



HIGHBAYS



VAPOURPROOF





Whether it be a simple paint finish customization or creating a mounting solution for a specific application, RAB Design works to find the best solution for you.

Please visit rabdesign.ca or reach out to your RAB Design Sales Representative to learn more.



STANPRO

VP & VANDAL

The LSVS Tri-Proof series is highly resistant to heavy impacts (IK10), water jets (IP66), dust, and temperature variations. This luminaire balances high performance lighting while providing minimum glare.

Ideal for use in commercial or industrial lighting.



AcuityBrands

CSVT

The CSVT™ is built on the technological framework of the CSS, providing greater customization and performance for everyday spaces.

And with the ability to switch lumens and adjust color temperature in one fixture, the CSVT can easily be adapted to the needs of each project – 9 different variations within the same SKU!



RAB DESIGN

FW4-LED

The FW4-LED is a 4' LED linear vapour-proof fixture.

Ideal for a variety of indoor and outdoor environments such as underground parking garages, industrial facilities, poultry barns, and commercial freezers.





FMLWL

The **FMLWL LED Wraparound** provides ambient lighting for surface-mount applications.

Sizes	CCT
2'	2700K, 3000K, 3500K, 5000K
4'	5000K



SBL

The **SBL LED Wraparound** provides a digital lighting platform to deliver general ambient lighting for surface-mount applications.

Ideal for closets, storage rooms, hallways, and offices.



Sizes	CCT
4'	3500K, 4000K



SMW

The **SMW Surface Mount Wraps** are 2' and 4' linkable linear fixtures for indoor use.

This wrap-around luminaire is easy to install and features a link connector for combining multiple fixtures in a row



TRI-LEVEL

The **L2TLV series LED strip lights** feature an integrated tri-level microwave motion sensor that regulates light levels according to the occupancy of a space.

These luminaires have been specially designed to prevent energy loss and to increase energy savings, by allowing the end-user to sensibly manage the degree of luminosity in applications or spaces that require continuous lighting, such hallways or common areas.



STAIRWELL

These Stairwell Fixtures are configured to meet specific requirements related to stairwell applications. These fixtures function equally well in hallways, bathrooms, or any area that is frequently unoccupied. Available with an optional integrated battery back-up.





CSS

The **CSS LED strip light** is the single lens version of the extremely popular CDS Strip.

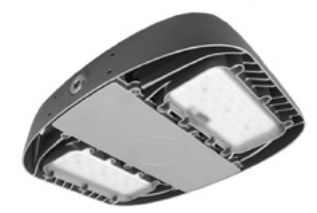
Offered in 4' and 8' lengths and from 3,000 to 10,000 lumens for your retail, warehouse, and office applications.

CCT
3000K, 4000K, 5000K



FLUX STREAM

Day-Brite / CFI FluxStream LED strip is a high-performing luminaire delivering smooth diffuse light ideal for light industrial, commercial and residential applications with unparalleled energy efficiency.



APPLETON

The **Appleton** brand has long been the hallmark for the protection of people and equipment while delivering reliable power.

Count on certified protection for any environment, from ordinary commercial settings to harsh industrial conditions, in any region of the world.

Their fittings, lighting, and power distribution solutions are designed to operate without incident: because failure is not an option.



Hazlux[®] by ABB

You can rely on **Hazlux[®]** to safely provide light where you need it, even under the harshest indoor and outdoor conditions.

If safety, labor reduction, quality and reliability are your priorities, consider Hazlux[®] lighting products to reduce maintenance and prevent downtime.





STANPRO

The **LED filament lamps** distinguish themselves by their sparkling white light, blending perfectly with crystal chandeliers and modern style fixtures as well as more vintage looks.



SATCO | NUVO

SATCO LED lamps offer one of today's largest selections of LED products — providing solutions for the commercial, industrial and residential markets.



PHILIPS

For every project where exceptional, high-quality lighting is required.

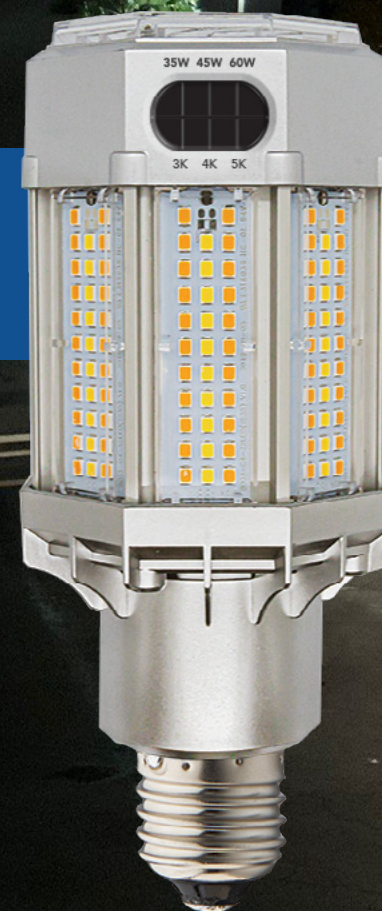
The **MasterClass line** of LEDs exceeds industry energy efficiency requirements, featuring improved lifespan and warranties with broad product ranges.



EIKO

LED Sign Tubes provide exceptional performance with reduced energy and maintenance costs.

 Light Efficient Design



Trust the original name in screw-in retrofits – Light Efficient Design

SUPERFLEX POST TOP RETROFITS

Switch between 3 wattages & 3 color temperatures on every model

Streamline your inventory dollars by drastically reducing sku count

Wattages range from 35W replacing up to 175W HID to 110W replacing 400W HID





ADVANCE EXPRESS

The **Advance Express Programmable Driver Program** offers a simple solution for replacement drivers in existing linear, outdoor and downlight LED fixtures.

The easy-to-use platform allows wireless programming of a wide variety of driver applications (120,277, 347 and 480 volt).

All Advance Express drivers are Class P listed, a requirement from UL for field replacement.



STANPRO

Stanpro's emergency lighting line consists of signs, combos, remotes and battery units.

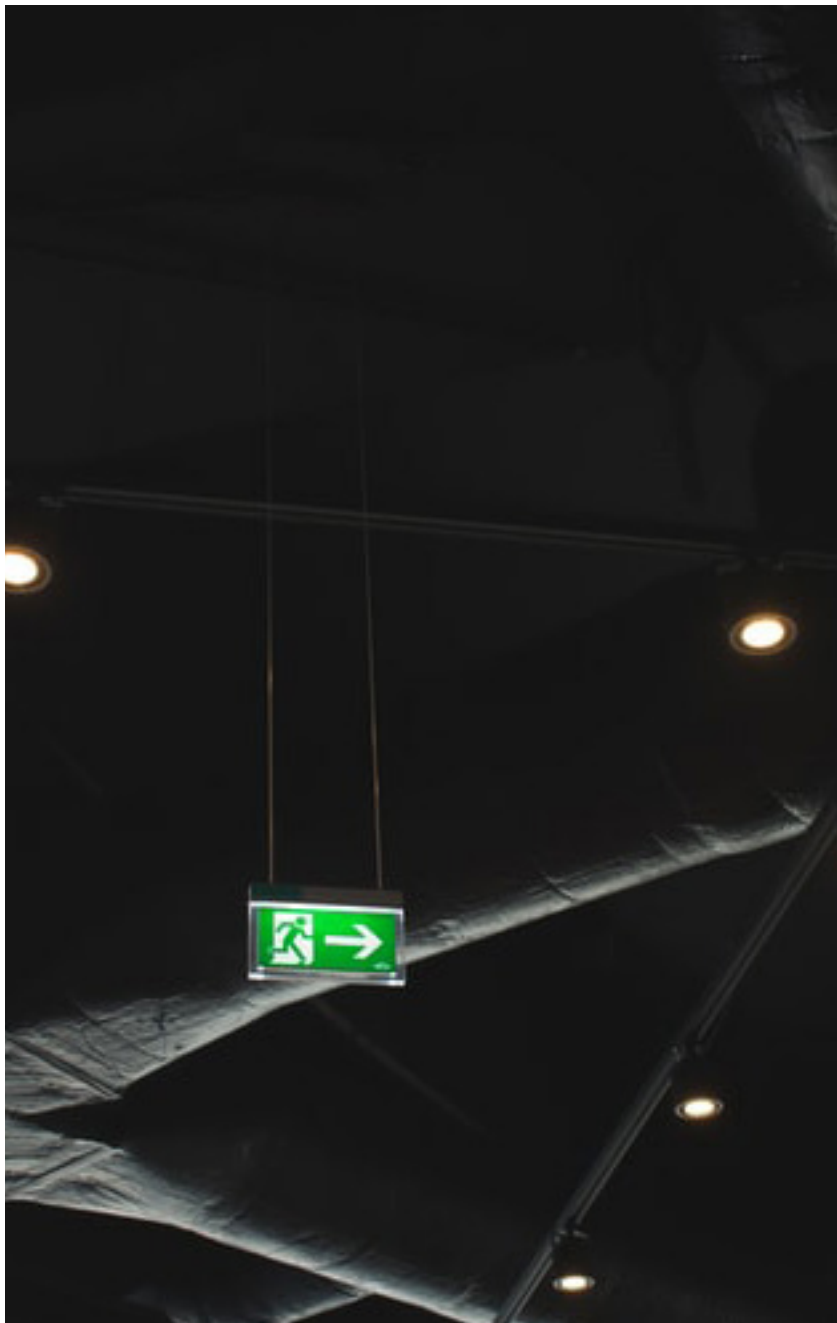
Stanpro uses the latest technologies to maximize the performance, reliability and cost efficiency of its products through the design and manufacturing in Canada while meeting the highest standards in the industry.

Explore these readily available emergency lighting products that will best suit your projects.

**Lumacell®
Emergi-Lite® by ABB**

ABB is a life safety solutions provider, delivering state-of-the-art systems and products into the emergency-lighting marketplace.

These products and services are designed to provide the most effective protection and safety, in line with customer needs, relevant industry standards and regulations.





WI-FI 24' LED RGB & WARM WHITE 10-LIGHT OUTDOOR STRING LIGHT

Dimmable, long lasting and wet location certified, **STARFISH™** plug-in string lights are portable and can be used indoors or out.



RGB Color**



Wet location



Warm White, 80 CRI
2700K



Dimmable, with app



WI-FI LED RGB & TUNABLE WHITE BULBS

Color changing and tunable white indoor and outdoor tape lights are dimmable with thousands of color and warm-to-cool white settings, damp location certified and offer an ever-changing array of versatility.





KEENE LED

The **KEENE LED** post top is compact and comfortable, with a sleek low profile design suitable for 10'-16' mounting heights.

Features include low glare comfort optics, field adjustable output, twist lock receptacle with shorting cap, and an LED driver suitable for 120 volt through to 347 volt operation.

The comfortable, low-glare optics make this an ideal choice for pedestrian scale applications such as condominiums, hotel parking lots, parks and walkways.

CCT
3000K, 4000K



STANPRO

BOH-L

The **BOH-L** is a LED bollard luminaire designed with high-efficiency. The housing is made of die cast aluminum with a flush-mounting base, polycarbonate lens, round top, and a powder coat finish over a chromate conversion coating.

CCT	Lumens
3000K, 4000K, 5000K	1,300 - 4,100 lm



BOL6 / BOL6LV-LED

Sleek, modern looking **bollards** ideal for light commercial/residential applications such as walkways, town houses, parkettes, and more.

Available in a louvred and non-louvred design.

CCT	Lumens
4000K	700 - 2,400 lm



RAB
DESIGN



STANPRO

The **FL** series is a family of highly efficient and affordable compact floodlights available in four different lumen packages.

Typical applications include both commercial and residential environment: backyards, walkways as well as floodlighting of signs and building fronts.



AcuityBrands

The **TFX LED floodlight** family is an industry leading distributor stock solution providing cost-effective and energy-efficient solutions to replace HID floodlights.

For the full solution, the TFX comes in four sizes delivering 7,000 to 41,000 lumens replacing 70W to 400W metal halide luminaires.



signify

The **Keene LED Slim Flood** is your best value for discreet and modern design on your floodlighting projects.

Versatile and stylish with six different sizes to choose from, Slim Flood provides application flexibility for ground, wall, or pole-mount installations. Ideal for sign lighting, building facades, security lighting, and general purpose floodlighting applications.



AcuityBrands

CNY

The **CNY LED** canopy luminaires are versatile, energy-efficient solutions for surface-mount applications.

Available in two sizes, these luminaires can replace a wide range of existing canopy luminaires; anything from CFL to 400W metal halide.

CCT	Lumens
4000K	4,500 lm, 6,600 lm



RAB DESIGN

GAR-LED78

High-efficiency garage / canopy light that replaces up to a 250W metal halide fixture thus providing 70% energy savings, reduced maintenance costs and longer fixture life.

Easy installation system facilitates a quick one-man install.

CCT	Lumens
4000K 5000K	7,200 lm





AcuityBrands

The BarnGuard LED barn light has it all with its white light, instant-on and low energy consumption.

And you will never have to change a bulb again!

A very affordable price and easy installation makes BarnGuard a no-brainer upgrade.



Signify

Roadway lighting solutions let you sustain today for a better tomorrow and can be further enhanced through these stand-alone and connected outdoor lighting solutions.

With Service tag added to your roadway luminaires, you can enjoy easier and faster LED maintenance operations and assistance throughout the life of the product.



STANPRO

The BL-LED fixture series is a high-efficacy, DLC Standard barn/area light ideal for security lighting, industrial yards, farms and barns.



Ceco Poles offers a variety of poles, standard and custom, thanks to a combined experience of over 90 years of pole building.

NOVA POLE

Nova Pole manufactures high-quality transmission, distribution and substation structures designed to meet applicable standards and customer specifications.



Nova Pole now offers an extensive line of pre-engineered, standard-class pole designs for transmission applications from 30' to 120' in length, and classes up to H10, and for distribution applications from 30' to 105' in length, and Class 5 to Class 1.

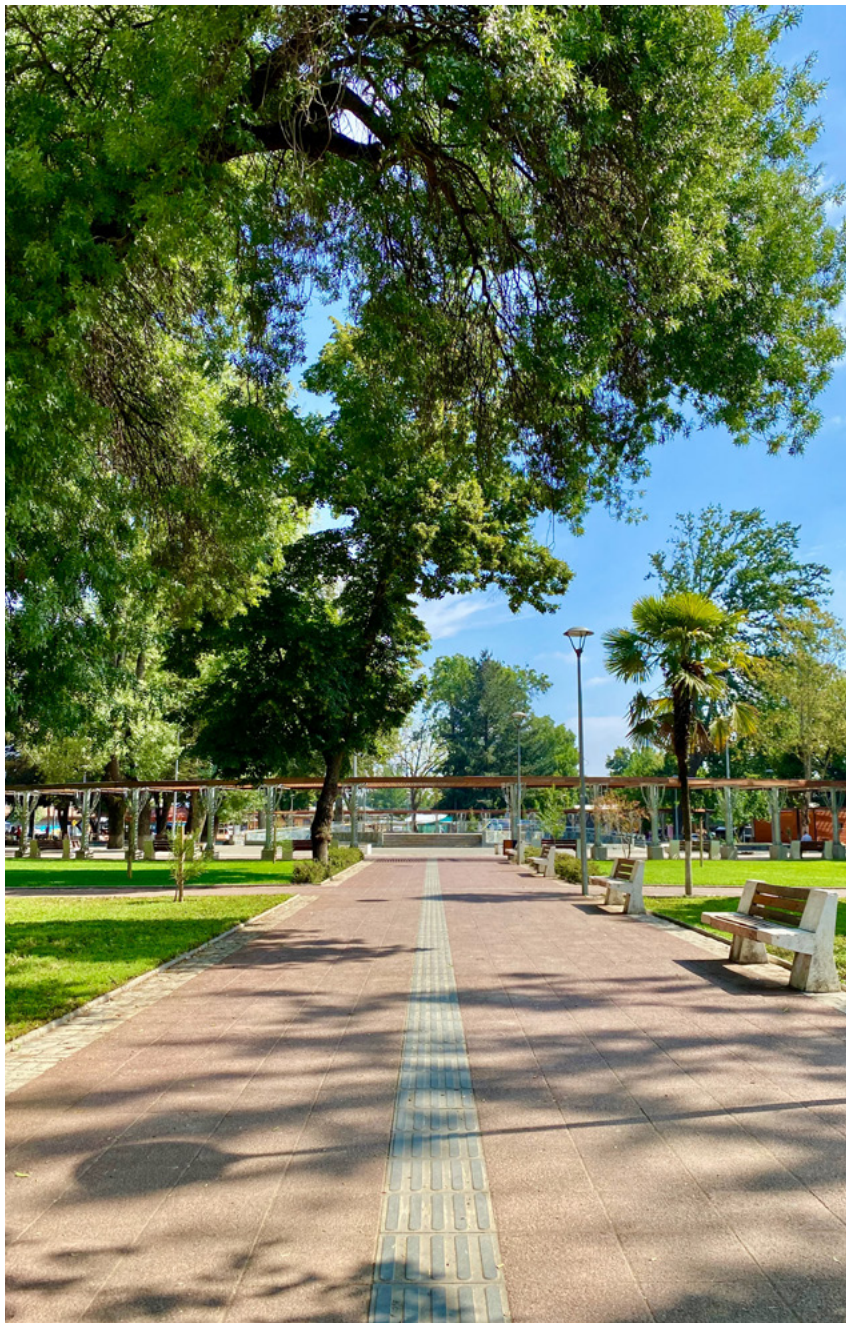


RAB DESIGN

The SPR pole is available from 8' up to 14' in height.

The following fixtures can be used with the SPR pole, Gamma, Torchlight, Small Colonial, Medium Colonial, and the Coachman.

Ideal for use in small courtyards, condominiums and apartment buildings.





TWX

TWX LED wall packs feature premium borosilicate glass lenses that work in conjunction with the high-efficiency light engine to provide superior illumination while minimizing wasted up-light.

The new slim design creates a less obtrusive appearance on the building while still fully covering the unsightly stains leftover from typical metal halide glass wall packs.

CCT	Lumens
3000K, 4000K	1,000 - 11,050 lm



TWR

TWR1 and TWR2 LED glass wall packs come with adjustable light output (ALO) technology.

Its energy-efficient LEDs have an expected service life of more than 20 years.

CCT	Lumens
4000K, 5000K	1,100 - 11,800 lm



TWS

TWS LED combines traditional wall pack design with high-output LEDs to provide an energy efficient, low maintenance LED wall pack suitable for replacing up to 100W MH fixtures.

TWS LED is for outdoor applications such as personnel doors, loading areas, driveways and parking areas.

CCT	Lumens
5000K	2,100 lm



WL-LED

WL-LED provides an aesthetically pleasing, economical wall-mounted light option that will suit a wide range of locations.

Energy-efficiency, durability, and a high-lumen output make this a perfect replacement for conventional HPS fixtures.

CCT	Lumens
5000K	2,800 lm





LPW SERIES

LytePro is a trustworthy and proven winner with a history of quality and is now available with even more configurations.

This wall sconce family combines excellent performance, design, and value to meet both stock and project needs.

CCT	Lumens
3000K, 4000K	1,000 - 11,050 lm



PW SERIES

Keene Low Profile Wall Mount features a discreet design that will complement any building exterior.

Three sizes are available in 15, 30, 50W and 80W output to accommodate multiple mounting heights.

Low Profile Wall delivers up to 110 lumens per watt for excellent energy savings over HID.

CCT	Lumens
4000K	1,650 - 8,050 lm



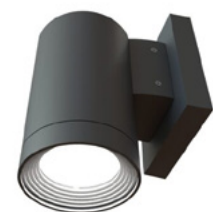
DWL SERIES

The **DWL2-LED30** is made from durable polycarbonate housing, has a frosted lens and a reflector to limit light losses.

The fixture has an elegant looking curved contour with a slim profile of 4.4" from the wall.

This unit has a cast aluminum back plate for optimal heat sinking.

CCT	Lumens
5000K	3,300 lm



WRD-4

The **WRD** is an architectural, specification-grade down light with advanced optics.

An ideal fixture for perimeter lighting in retail buildings, atriums, condominiums, and other architectural properties.

CCT
4000K, 5000K



MS2H

The **MS2HS** has a detection range of 180° and is ideal for outdoor use on building perimeters and entrances.

CCT	Lumens
5000K	2,000 lm



OVFL

The **OLF family** has the largest breadth of offering from one security floodlight family.

It provides a multitude of lighting, energy-saving packages and control options to meet the varying needs of your residential single and multi-family applications.

Lumens
1,700 - 3,100 lm



HomeGuard LED
A complete security floodlighting solution





LEVITON

Wired Dimmer and Switch Companions pair with **Decora Smart Dimmers**, Switches or Fan Speed Controls to provide additional lighting controls where needed, such as at the base of a staircase, the end of a hallway or open areas with multiple entrances that have existing 3-way or more controls.



Simplify the Way You Add Controls



AGILITY is Eiko's Controls EcoSystem.

As part of the **AGILITY** Controls EcoSystem, Eiko brings you Z10-enabled fixtures.

Created with the customer in mind, **AGILITY** offers high-value, technologically advanced, simple-to-commission solutions focused on application-based segmentation. Eiko has a controls solution for all your application needs.



Lutron LED+ dimmers work with a broad range of dimmable LEDs, and all incandescent and halogen bulbs.

The selection tool makes it easy to find the best LED/ dimmer pair for your application.



Stock Z10 fixtures by EIKO now, and be ready to offer maximum energy savings to your customers at any time!

Z10 is an industry standard that allows controls devices to be added to lighting fixtures in seconds with a twist of the wrist.

Value-add photocontrols, motion sensors, networked lighting controls, or other third-party Z10-enabled controls devices whenever they're needed; change them out just as easily.

One Z10-enabled fixture opens a world of possibilities.

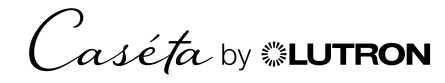
It's the ultimate choice for controls flexibility.





Create smart home lighting with **Decora Smart Wi-Fi** dimmers, switches, smart plugs, fan speed controls and outlets.

Schedule lights to turn on and off automatically or create lighting scenes for different activities by using the My Leviton app or your voice with Amazon Alexa™, HomeKit™ (2nd Gen only), Google, SmartThings, August or IFTTT.



The **SBL LED Wraparound** provides a digital lighting platform to deliver general ambient lighting for surface-mount applications.

Ideal for closets, storage rooms, hallways, and offices.



The **SensorSwitch™** product line provides an innovative, high-quality and cost-effective controls solution for every application.

With standalone wired and wireless options, SensorSwitch has a comprehensive product portfolio thoughtfully designed for easy installation and use.

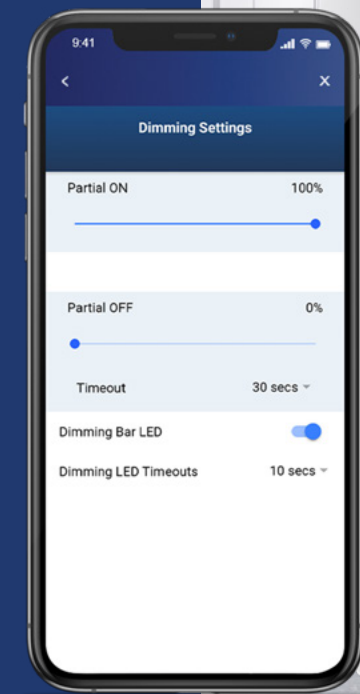
SMART WALLBOX SENSORS



Leviton's Smart Wallbox Sensors combine occupancy or vacancy sensing with 0-10V dimming or ON/OFF switching to provide a simple commercial grade solution for easy energy savings, local control and code compliance. Smart Wallbox Sensors offer easy programming and configuration.

This includes an out-of-the-box default mode for auto-ON or auto-OFF operation with a 10-minute timeout as well as convenient pushbutton programming for common room settings.

The Smart Sensor App can also be used to configure and enable additional features like sensor sensitivity, timeouts, daylighting, hold-OFF, partial-ON, partial-OFF and more. Ideal for non-residential and commercial spaces up to 1,100 SF including offices, meeting rooms, and lobbies.





STANPRO

Decorative Pendants, available in a selection of seven finishes and two different lampholder styles.

Reflectors, glass shades and cages are also available to create a customizable look. Offered with a 10' cord, these pendants are suitable for both commercial and residential applications.

Whether your decor is traditional, industrial, modern or rustic, you'll find a solution that will suit your style.



STANPRO

The **LED tape** allows the customization of any area, as it can be suspended, surfaced or recessed-mounted.

This professional grade flexible LED tape is ideal for a wide variety of applications, such as cabinetry, shelving, toe kicks, coves, edge lighting, etc.





STANPRO

Two different styles of **LED Wall Sconces**, one of traditional design and the other more modern with a linear profile.

These two models can easily fit into any decor, whether as a vanity fixture in a bathroom or as accent lighting in an hotel corridor.

AcuityBrands

Provides an **LED lighting platform** to deliver general or task lighting for residential and light commercial applications.

Light engine delivers long life and excellent color to ensure a quality, low-maintenance light installation.

Ideal for use in bathrooms, lavatories, hallways, corridors, stairways, utility areas and more.



LIND EQUIPMENT

WORK CONFIDENTLY.

The **Victory Advance UVC Decontamination Conveyor** is a portable unit that can decontaminate packages and equipment on all sides as the item moves through the conveyor.



AcuityBrands

EvolAIR UV™ delivers a modern approach to UV germicidal* air room treatment.

Available for drop-in grid ceiling, recessed hard-ceiling, surface-mount or suspended installations.



Signify

The **ALKCO UVC** louvered wall mount utilizes Philips UVC technology to continuously treat the air to reduce airborne pathogens.

UVC can play an important role in a broad range of applications such as schools, offices, industry, (food) retail and museums.





AcuityBrands.

The **Healthcare Lighting**® brand was founded with a singular mission: to deliver high-quality lighting systems that contribute to positive patient outcomes.

@signify

Day-Brite / CFI Multi-Med patient room exam luminaire provides the essential illumination requirements for examination lighting.

The overall clean appearance of Multi-Med helps it blend into the ceiling plane and helps the environment feel less clinical.

The standard anti-microbial finish and lens support a healthcare facility's infection-control efforts.



@signify

Natural light often falls short on delivering the light needed by crops for optimal growth.

Without supplemental grow lights, a run of low light days can cause problems and delays in meeting customer orders and your spring delivery dates.

By adding Philips LED top-lighting in your greenhouse, you can grow with greater predictability and confidence.





STANPRO

The temporary **String Lights** were designed to provide lighting in tough environments, whether you need lighting for a wide area or to perform a specific task.

The String Lights are offered in lengths of 5' and 100' and are made of 12 or 14 AWG cable, which allows for them to be daisy-chained.



LINDE EQUIPMENT WORK CONFIDENTLY.

All-in-One Beacon LED Tower provides all the functionality of three separate lighting assets into a single package.

Use it as a generator powered light tower, a diffused light tower and as an electric powered light tower.

ALBERTA

sales.ab@bartlegibson.com

Airdrie

Ph (403) 945-9481
Fax (403) 945-9487

Hinton

Ph (780) 865-4800
Fax (780) 865-7900

Barrhead

Ph (780) 674-4255
Fax (780) 674-2833

Lethbridge

Ph (403) 320-0411
Fax (403) 320-7313
1-800-440-1586

Calgary - Northeast

Ph (403) 291-1099
Fax (403) 291-2849
1-877-303-3933

Lloydminster

Ph (780) 875-2683
Fax (780) 875-8978

Calgary - South Side

Ph (403) 216-6717
Fax (403) 252-6881

Medicine Hat

Ph (403) 527-3565
Fax (403) 526-8164
1-800-461-2072

Edmonton - North Side

Ph (780) 472-2850
Fax (780) 476-6686
1-800-661-5615

Peace River

Ph (780) 624-4050
Fax (780) 624-1110

Edmonton - South Side

Ph (780) 437-7767
Fax (780) 437-6319

Red Deer

Triangle Supply
Ph (403) 340-1650
Fax (403) 340-8360

Edson

Ph (780) 723-6180
Fax (780) 723-7493

Spruce Grove

Ph (780) 962-4891
Fax (780) 962-0878

Fort McMurray

Ph (780) 743-4476
Fax (780) 791-6616

Wetaskiwin

Ph (780) 352-3722
Fax (780) 352-8407



BRITISH COLUMBIA

sales.bc@bartlegibson.com

Chilliwack

Ph (604) 792-0866
Fax (604) 792-7622

Prince George

Ph (250) 562-5505
Fax (250) 562-5073
1-866-580-5505

Courtenay

Ph (250) 334-0645
Fax (250) 334-3929

Saanich

Ph (250) 727-9976
Fax (250) 727-0547

Langford

Ph (250) 389-1073
Fax (250) 478-3297

Surrey

Ph (604) 502-9122
Fax (604) 502-9133

Maple Ridge

Ph (604) 467-1535
Fax (604) 467-3423

Vancouver

Ph (604) 253-2779
Fax (604) 253-8443

Nanaimo

Ph (250) 758-1771
Fax (250) 758-4640

West Kelowna

Ph (250) 769-3101
Fax (250) 769-0559

North Vancouver

Ph (604) 988-4141
Fax (604) 988-6633

Whistler

Ph (604) 932-4871
Fax (604) 932-2437

Port Coquitlam

Ph (604) 941-7318
Fax (604) 942-7218

LIGHTING SPECIALIST

Al Haberman

Bartle & Gibson Head Office
al.haberman@bartlegibson.com
Ph (780) 472 2850 ext. 230
(780) 238-7552

SASKATCHEWAN

sales.sk@bartlegibson.com

Swift Current

Ph (306) 773-1800
Fax (306) 773-1817

NORTHWEST TERRITORIES

salesyw@bartlegibson.com

Yellow Knife

Ph (867) 920-2248
Fax (867) 873-5730

Download the interactive digital guide at
bartlegibson.com/lrg

